

Microsoft Access XP

Workbook - Intermediate Level



SAMPLE

© 1995-2010 Cheltenham Courseware Pty. Ltd.

All trademarks acknowledged. E&OE.

No part of this document may be copied without written permission from Cheltenham Courseware unless produced under the terms of a courseware site license agreement with Cheltenham Courseware.

All reasonable precautions have been taken in the preparation of this document, including both technical and non-technical proofing. Cheltenham Courseware and all staff assume no responsibility for any errors or omissions. No warranties are made, expressed or implied with regard to these notes. Cheltenham Courseware shall not be responsible for any direct, incidental or consequential damages arising from the use of any material contained in this document. If you find any errors in these training modules, please inform Cheltenham Courseware. Whilst every effort is made to eradicate typing or technical mistakes, we apologise for any errors you may detect. All courses are updated on a regular basis, so your feedback is both valued by us and will help us to maintain the highest possible standards.

Sample versions of courseware from Cheltenham Courseware

(Normally supplied in Adobe Acrobat format): If the version of courseware that you are viewing is marked as NOT FOR TRAINING, SAMPLE, or similar, then it cannot be used as part of a training course, and is made available purely for content and style review. This is to give you the opportunity to preview our courseware, prior to making a purchasing decision. Sample versions may not be re-sold to a third party.

For current license information

This document may only be used under the terms of the license agreement from Cheltenham Courseware. Cheltenham Courseware reserves the right to alter the licensing conditions at any time, without prior notice. Please see the site license agreement available at: www.cheltenhamcourseware.com.au/agreement

Contact Information

Australia / Asia Pacific / Europe (ex. UK) / Rest of the World

Email: info@cheltenhamcourseware.com.au
Web: www.cheltenhamcourseware.com.au

USA / Canada

Email: info@cheltenhamcourseware.com
Web: www.cheltenhamcourseware.com

UK

Email: info@cctglobal.com
Web: www.cctglobal.com



SAMPLE

INSTALLING THE SAMPLE FILES INTO THE HARD DISK	4
INSTALLING THE SAMPLE FILES.....	4
WORKING WITH THE NORTHWIND SAMPLE DATABASE	5
INSTALLING THE NORTHWIND DATABASE	5
DESIGNING TABLES IN ACCESS 2002.....	6
ESTABLISHING RELATIONSHIPS.....	6
WORKING WITH INDEXES	6
WORKING WITH DATA TYPES.....	7
DESIGNING QUERIES IN ACCESS 2002.....	8
CREATING ACTION QUERIES	8
CREATING PARAMETER QUERIES.....	9
CREATING CALCULATED COLUMNS IN QUERIES.....	9
JOINING TABLES	10
DESIGNING FORMS IN ACCESS 2002.....	12
CREATING DATA ENTRY FORMS	12
WORKING WITH SUBFORMS	13
CREATING POP-UP FORMS	14
WORKING WITH SWITCHBOARDS.....	15
DESIGNING REPORTS IN ACCESS 2002.....	17
WORKING WITH STANDARD REPORTS.....	17
WORKING WITH SUBREPORTS	18
WORKING WITH REPORT SNAPSHOTS.....	20
DEVELOPING DATA ACCESS PAGES	21
WORKING WITH PIVOTTABLES AND PIVOTCHARTS.....	23
CREATING PIVOT TABLES AND PIVOT CHARTS	23
IMPORTING AND EXPORTING	26
LINKING TO EXTERNAL DATA SOURCES.....	26
IMPORTING DATA INTO ACCESS	28
EXPORTING DATA FROM ACCESS.....	29
BUILDING EXPRESSIONS.....	30
USING THE EXPRESSION BUILDER	30
USING COMMON BUILT-IN FUNCTIONS.....	31

SAMPLE

Installing the Sample Files into the Hard Disk

Installing the Sample Files

- Use Windows Explorer to create a folder called **Access XP Intermediate Samples**, in the **My Documents** folder.
- Copy the sample files for this course to the **My Documents\Access XP Intermediate Samples** folder. If these files have been copied to your network server, then ask your trainer/supervisor for more information about how to copy these files to your PC's hard disk.

SAMPLE

Working with the Northwind Sample Database

Installing the Northwind Database

- Open Microsoft Access 2002.
- Click the **Search** button on the **Database** toolbar.
- In the Search text box, type **Northwind**.
- Click **Search**.
- If **Northwind.mdb** appears in the **Search Results**, click on the file to open it and proceed to the next chapter.
- If **Northwind** is not found in the **Search Results** it will need to be installed.
- Insert the Microsoft Office XP CD-ROM in the CD-ROM drive.
- Double-click **Setup**.

Note: If your computer has autorun enabled you will be presented directly with the Microsoft Office XP setup screen.

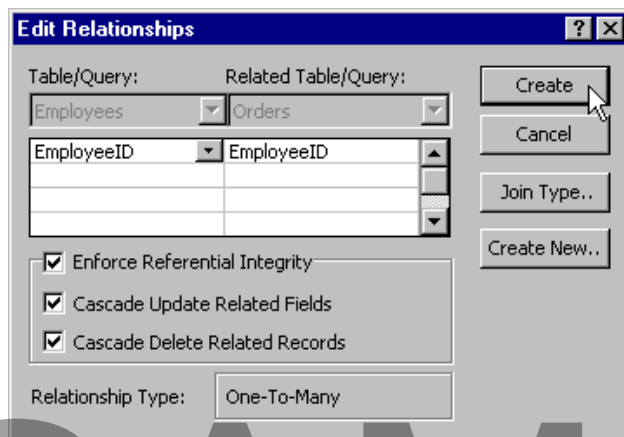
- Select **Add or Remove Features**.
- Click **Next**.
- Under **Features to Install**, select the Microsoft Access for Windows subtree.
- Under **Sample Databases**, select **Run all from My Computer**.
- Click **Update**.
- Once the installer completes, click **OK** to finish.
- Click the **Search** button on the **Database** toolbar.
- In the **Search** text box, type **Northwind**.
- Click **Search**.
- When **Northwind.mdb** appears in the **Search Results**, click on the file to open it and proceed to the next chapter.

SAMPLE

Designing Tables in Access 2002

Establishing Relationships

- With Northwind open, click **OK** on the **Northwind Traders** splash screen.
- At the Main Switchboard, click the **Display Database Window** button.
- Click the **Relationships** button on the **Database** toolbar.
- Right-click on the **relationship** between the **Employees** and **Orders** tables.
- From the pop-up menu, select **Delete**.
- Click the **Yes** button when prompted to delete the relationship.
- To re-create the relationship between the **Employees** and **Orders** tables, drag the **EmployeeID** field from the **Employees** table to the **EmployeeID** field in the **Orders** table.
- Click **Join Type** in the **Edit Relationships** dialog box.
- Select the option button labeled **2**.
- Click **OK**.
- Check the **Enforce Referential Integrity** box.
- Check the **Cascade Update Related Fields** check box.
- Check the **Cascade Delete Related Fields** check box:

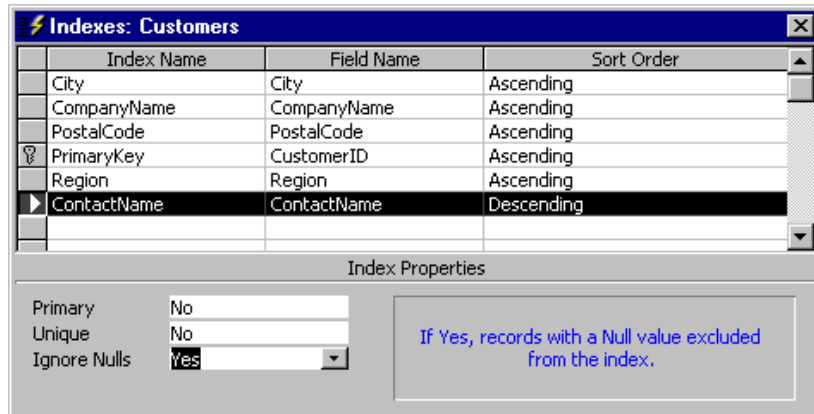


- Click **Create**.
- Click the **Save** button.
- Close the **Relationships** window.

Working with Indexes

- Click on **Tables** in the **Objects** pane.
- Open the **Customers** table in **Design** view.
- Click the **Indexes** button on the **Table Design** toolbar.
- Type **ContactName** in the **Index Name** column.

- Select **ContactName** from the drop-down menu in the **Field Name** column.
- Select **Descending** from the drop-down menu in the **Sort Order** column.
- Select **Yes** from the **Ignore Nulls** drop-down menu in the **Index Properties** area:



- Click the **Close** button on the **Indexes** title bar.
- Click the **Save** button.
- Close the table.

Working with Data Types

- Click on **Tables** in the **Objects** pane.
- Open the **Customers** table in **Design** view.
- Type a new field named **CompanySlogan** in the **Field Name** column.
- Select **Text** from the **Data Type** drop-down menu.
- In the **Field Properties** area, set the **Field Size** to 100.
- Click the **Save** button.
- Close the table.

SAMPLE

Designing Queries in Access 2002

Creating Action Queries

- Click on **Queries** in the **Objects** pane.
- Click the **New** button to open the **New Query** dialog box.
- Select **Design View**.
- Click **OK**.
- Select **Products** from the **Tables** tab in the **Show Table** dialog box.
- Click **Add**.
- Click **Close**.
- Click on the **Query Type** drop-down menu on the **Query Design** toolbar.
- Select **Update Query**.
- Select **UnitPrice** from the **Field** drop-down menu.
- Select the **Update To** section of the query grid and type **[UnitPrice]*2**:

Field:	UnitPrice
Table:	Products
Update To:	[UnitPrice]*2
Criteria:	
or:	

- Click the **Run** button on the **Query Design** toolbar to execute the update.
- Click **Yes** to apply the changes.
- Save the update query as **Multiply Unit Price by Two**.
- Click **OK**.
- Right-click on the **Products** table in the query window.
- From the pop-up menu, select **Remove Table**.
- Click the **Show Table** button on the **Query Design** toolbar.
- Select **Orders** from the **Tables** tab in the **Show Table** dialog box.
- Click **Add**.
- Click **Close**.
- Click the **Query Type** drop-down menu on the **Query Design** toolbar.
- Select **Delete Query**.
- Select **OrderID** from the **Field** drop-down menu.
- Type **10249** in the **Criteria** section of the query grid:

Field:	OrderID
Table:	Orders
Delete:	Where
Criteria:	10249
or:	

- Click the **Run** button on the **Query Design** toolbar to execute the delete.
- Click **Yes** to apply the changes.
- From the main menu, select **File > Save As**.

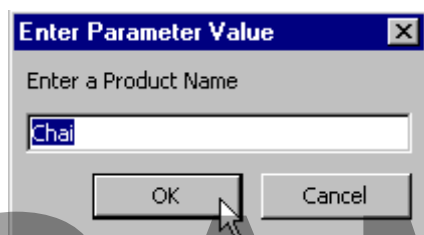
- Type **Delete OrderID 10249**.
- Click **OK**.
- Close the query window.

Creating Parameter Queries

- Click on **Queries** in the **Objects** pane.
- Click the **New** button to open the **New Query** dialog box.
- Select **Design View**.
- Click **OK**.
- Select **Products** from the **Tables** tab in the **Show Table** dialog box.
- Click **Add**.
- Click **Close**.
- Select **ProductID**, **ProductName**, and **SupplierID** from the **Field** drop-down menu.
- In the Criteria text box under ProductName, type *[Enter a Product Name]*:

Field:	ProductID	ProductName	SupplierID
Table:	Products	Products	Products
Sort:			
Show:	<input checked="" type="checkbox"/>	<input checked="" type="checkbox"/>	<input checked="" type="checkbox"/>
Criteria:		[Enter a Product Name]	
or:			

- Click the **Run** button on the **Query Design** toolbar to execute the query.
- Type **Chai**.
- Click **OK**:



- Save the query as **Search By Product Name**.
- Click **OK**.
- Close the query.

Creating Calculated Columns in Queries

- Click on **Queries** in the **Objects** pane.
- Click the **New** button to open the **New Query** dialog box.
- Select **Design View**.
- Click **OK**.

- Select **Products** from the **Tables** tab in the **Show Table** dialog box.
- Click **Add**.
- Click **Close**.
- Select **ProductName** and **UnitPrice** from the **Field** drop-down menu.
- In the next field type **[UnitPrice]*10**:

Field:	ProductName	UnitPrice	Expr1: [UnitPrice]*10	
Table:	Products	Products		
Sort:				
Show:	<input checked="" type="checkbox"/>	<input checked="" type="checkbox"/>	<input checked="" type="checkbox"/>	<input type="checkbox"/>
Criteria:				
or:				

- Click the **Run** button on the **Query Design** toolbar to execute the query:

Note: Access automatically displays the calculated column as **Expr1**.

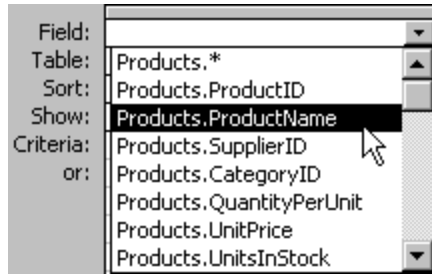
- Save the query as **UnitPrice * 10**.
- Click **OK**.
- Close the query.

Joining Tables

- Click **Queries** in the **Objects** pane.
- Click the **New** button to open the **New Query** dialog box.
- Select Design View.
- Click **OK**.
- Select **Products** from the **Tables** tab in the **Show Table** dialog box.
- Click **Add**.
- Select **Unit Price * 10** from the **Queries** tab in the **Show Table** dialog box.
- Click **Add**.
- Click **Close**.
- Create a join between the tables by dragging and dropping the **ProductName** field from the **Products** table to the **ProductName** field in the **Unit Price * 10** query:

Products	UnitPrice * 10
* ProductID	* ProductName
ProductName	UnitPrice
SupplierID	Expr1
CategoryID	
QuantityPerUnit	
UnitPrice	
UnitsInStock	
UnitsOnOrder	
ReorderLevel	
Discontinued	

- For the first field, select **Products.ProductName** from the **Field** drop-down menu:



- For the second field, select **Products.QuantityPerUnit** from the **Field** drop-down menu:
- For the third field, select **UnitPrice * 10.Expr1** from the **Field** drop-down menu:

Field:	ProductName	QuantityPerUnit	Expr1
Table:	Products	Products	UnitPrice * 10
Sort:			
Show:	<input checked="" type="checkbox"/>	<input checked="" type="checkbox"/>	<input checked="" type="checkbox"/>
Criteria:			
or:			

- Click the **Run** button on the **Query Design** toolbar to execute the query.
- Save the query as **Join Product and Price * 10**.
- Click **OK**.
- Close the query window.

SAMPLE

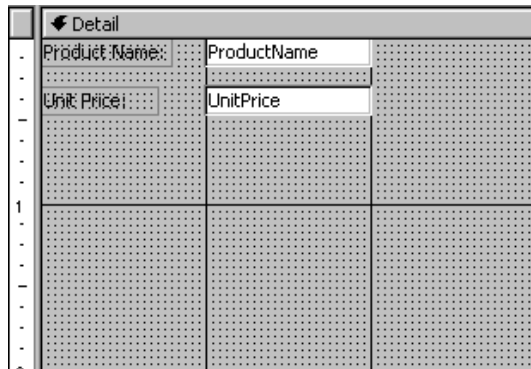
Designing Forms in Access 2002

Creating Data Entry Forms

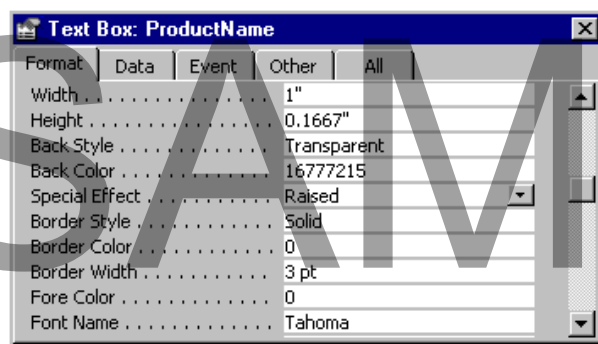
- Click **Forms** in the **Objects** pane.
- Click the **New** button.
- Select **Design View**.
- Select **Products** from the drop-down menu.
- Click **OK**.

Note: Close the **Form** properties dialog box if it appears.

- Drag and drop the **ProductName** and **UnitPrice** fields from the **Products** data source to the **Detail** area of the **form**:



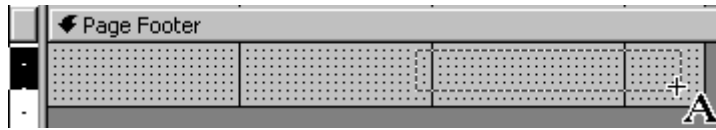
- Right-click on the **ProductName** control.
- From the pop-up menu, select **Properties**.
- Select the **Format** tab.
- From the **Special Effect** drop down-menu, select **Raised**:



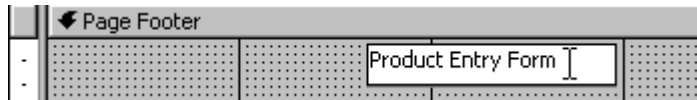
- Close the dialog box.
- Right-click in the **Detail** area of the form.
- From the pop-up menu, select **Page Header/Footer**.
- Click the **Label** control on the **Toolbox** toolbar.

Note: From the main menu, select **View > Toolbox** if the **Toolbox** toolbar is not open.

- Place the **Label** control on the **page footer** section of the form:



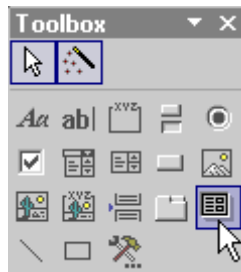
- Type **Product Entry Form**:



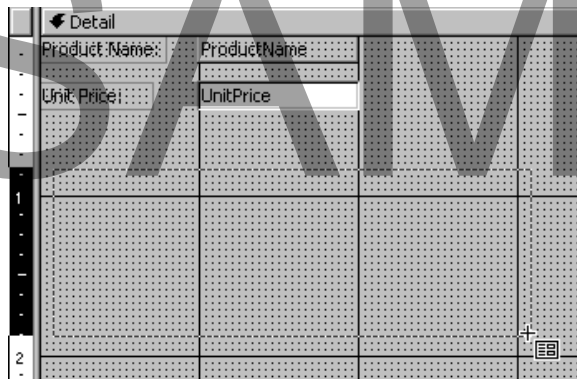
- Save the form as **Product Entry Form**.
- Click **OK**.
- Close the form.

Working with Subforms

- Open the Product Entry Form in Design view.
- Click the **Subform/Subreport** button on the **Toolbox** toolbar:



- Create a **subform** in the **Detail** area of the form:

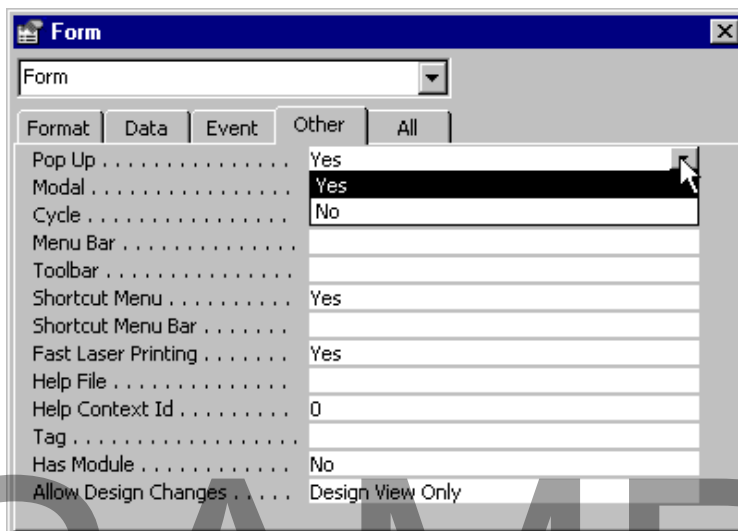


- Select the **Use existing Tables and Queries option** button.
- Click **Next**.

- Select **Table: Categories** from the **Tables/Queries** drop-down menu.
- Add the CategoryID, CategoryName and Description fields.
- Click **Next**.
- Select the **Choose from a list** option button.
- Click **Next**.
- Type *Show Categories Subform* as the name of the subform.
- Click **Finish**.
- Save the changes to the **Product Entry Form**.
- Close the form.

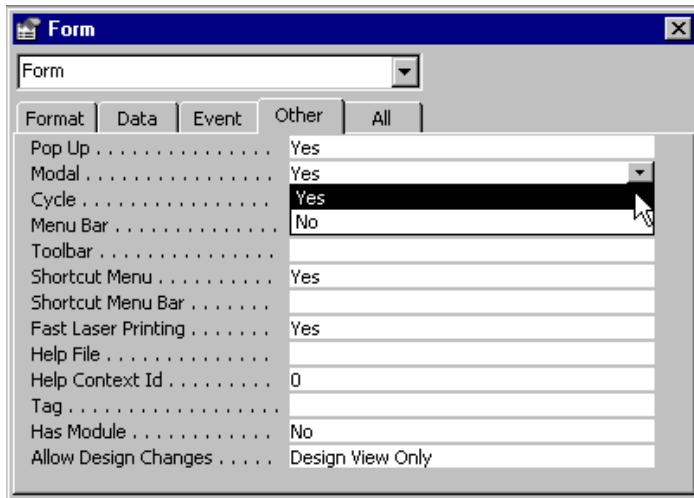
Creating Pop-up Forms

- Open the **Product Entry Form** in Design view.
- If the **Form** properties dialog box is not open, right-click on the main **form** area.
- From the pop-up menu, select **Properties**.
- Click the **Other** tab.
- Select **Yes** from the **Pop Up** drop-down menu:



SAMPLE

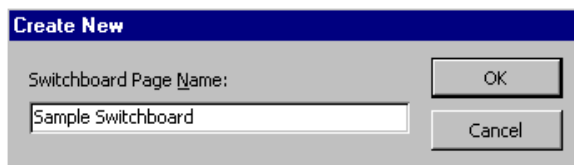
- Select **Yes** from the **Modal** drop-down menu:



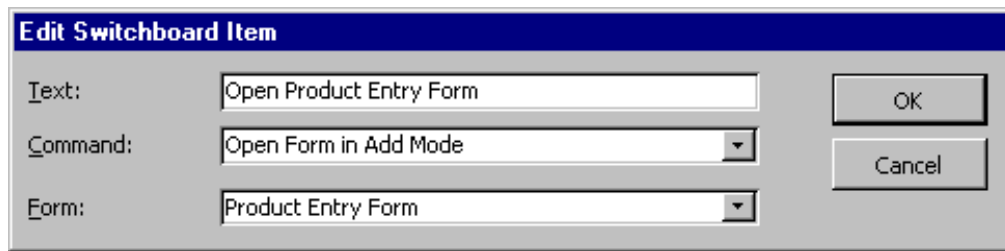
- Close the **Form** properties dialog box.
- Save the changes to the **Product Entry Form**.
- Close the form.

Working with Switchboards

- From the main menu, select **Tools > Database Utilities > Switchboard Manager**.
- Click **New** in the **Switchboard Manager** dialog box.
- Type **Sample Switchboard** for the name of the **switchboard**:



- Click **OK**.
- Select **Sample Switchboard**.
- Click **Edit**.
- Click **New**.
- Type **Open Product Entry Form** in the Text field.
- Select **Open Form in Add Mode** from the **Command** drop-down menu.
- Select **Product Entry Form** in the **Form** drop-down menu:



Edit Switchboard Item

Text: Open Product Entry Form

Command: Open Form in Add Mode

Form: Product Entry Form

OK

Cancel

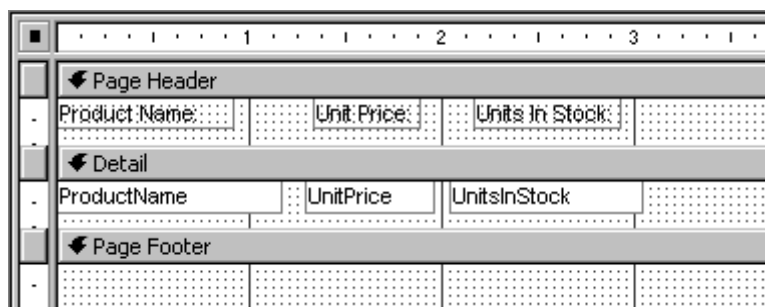
- Click **OK**.
- Click **Close**.
- Click the **Make Default** button.
- Click **Close**.

SAMPLE

Designing Reports in Access 2002

Working with Standard Reports

- Click **Reports** in the **Objects** pane.
- Click the **New** button.
- Select **Design View**.
- Select **Products** from the drop-down menu.
- Click **OK**.
- Drag and drop the **ProductName**, **UnitPrice**, and **UnitsInStock** fields from the products **data source** to the **Detail** area of the report.
- Cut the **Product Name**, **Unit Price**, and **Units In Stock** labels from the **Detail** area of the report and paste in the **Page Header** area of the report.
- Rearrange the labels and controls as shown below:

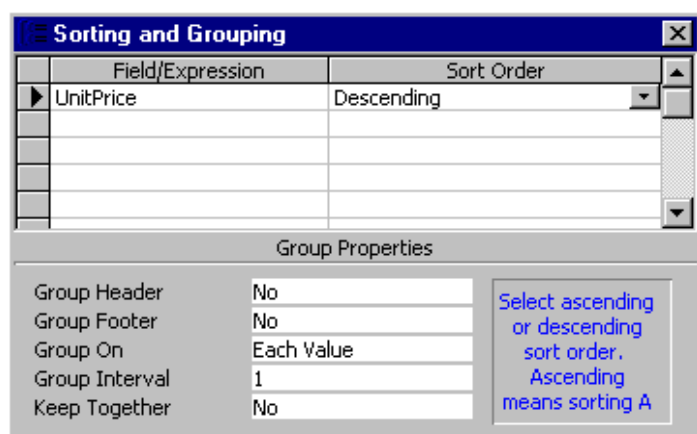


- Right-click in the **Detail** area of the report.
- From the pop-up menu, select **Report Header/Footer**.
- Click the **Label** control on the **Toolbox** toolbar.
- Place the **Label** control on the **Report Footer** section of the report:



- Type **Products Report**:

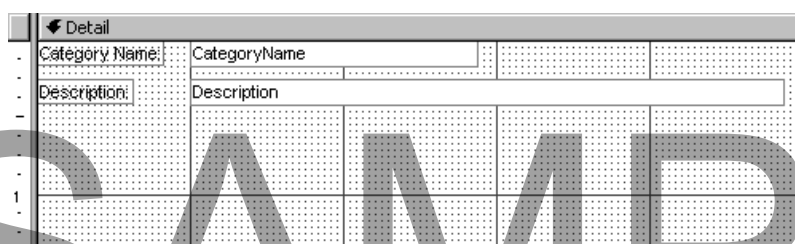
- Right-click in the **detail** area of the report.
- From the pop-up menu, select **Sorting and Grouping**.
- Select **UnitPrice** from the **Field/Expression** drop-down menu.
- Select the **Descending** sort order from the **Sort Order** drop-down menu:



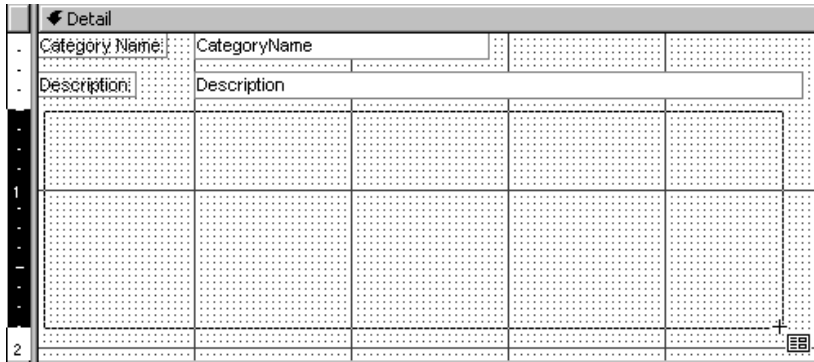
- Close the **Sorting and Grouping** dialog box.
- Save the form as **Products Report**.
- Click **OK**.
- Close the report.

Working with Subreports

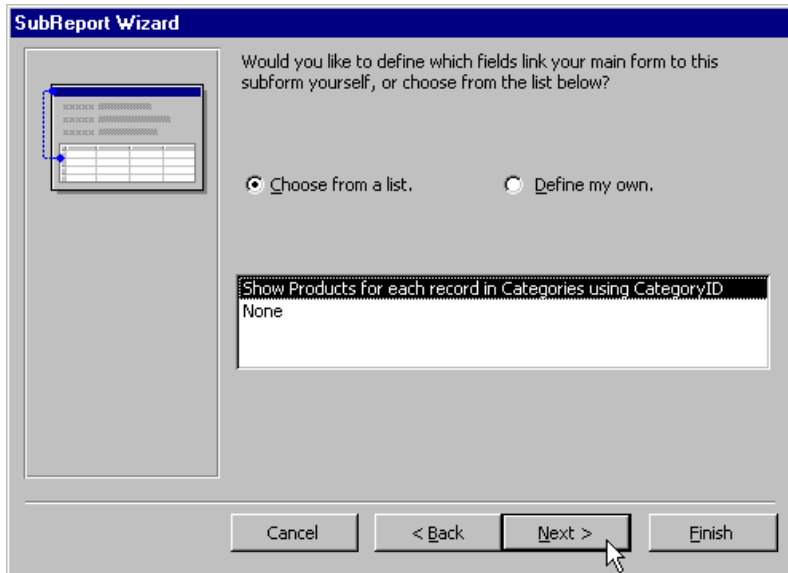
- Click **Reports** in the **Objects** pane.
- Click the **New** button.
- Select Design View.
- Select **Categories** from the drop-down menu.
- Click **OK**.
- Drag and drop the **CategoryName** and **Description** fields from the **Categories** data source to the **Detail** area of the **report**.
- Resize the labels and controls as shown below:



- Click the **Subform/Subreport** button on the **Toolbox** toolbar.
- Create a **subreport** in the **Detail** area of the form:

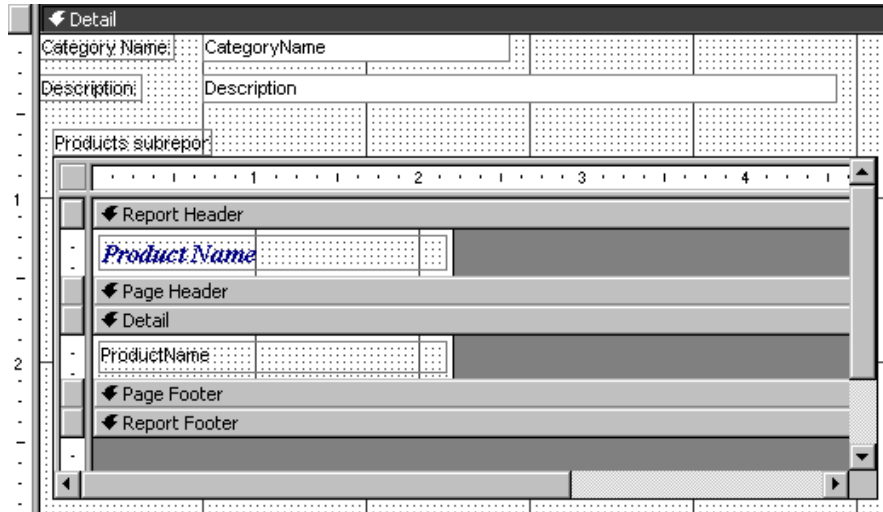


- Select the **Use existing Tables and Queries** option button.
- Click **Next**.
- Select **Table: Products** from the **Tables/Queries** drop-down menu.
- Add the **ProductName** field.
- Click **Next**.
- Select the **Choose from a list** option button:

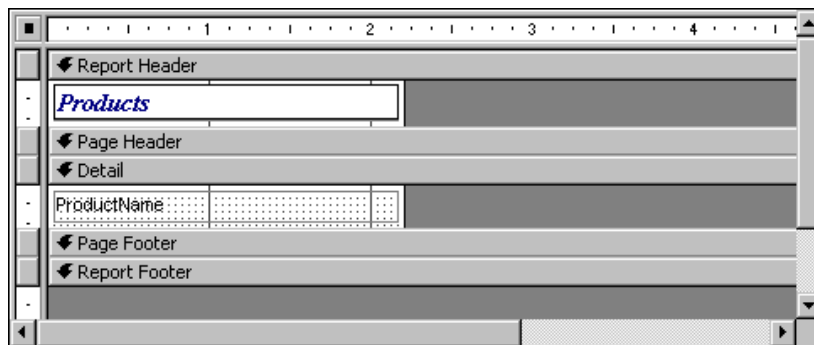


- Click **Next**.
- Type **Products subreport** as the name of the subreport.
- Click **Finish**.
- With the main report in **Design** view, move and resize the **Products subreport** as shown below:

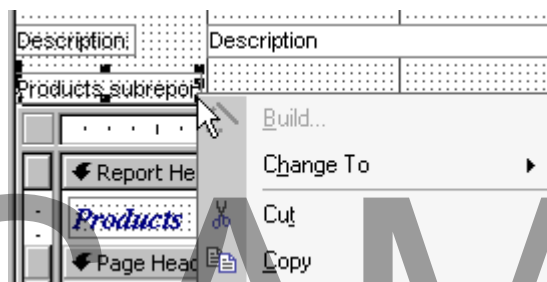
SAMPLE



- Change the Report Header for the Products subreport to **Products**:



- Right-click on the **Product subreport** label just above the subreport as shown below:

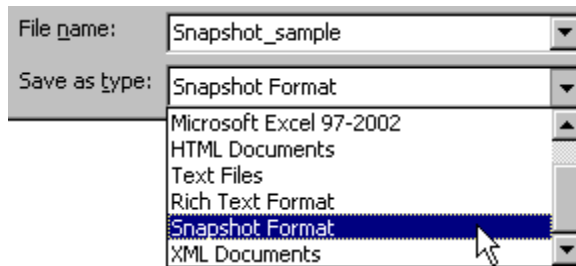


- From the pop-up menu, select **Cut**.
- Save the report as **Categories and Products**.
- Click **OK**.
- Close the report.

Working with Report Snapshots

- Click **Reports** in the **Objects** pane.
- Select the **Categories and Products** report.

- From the main menu, select **File > Export**.
- Locate your Access XP Intermediate Samples folder.
- Select **Snapshot Format** from the **Save as type** drop-down menu:

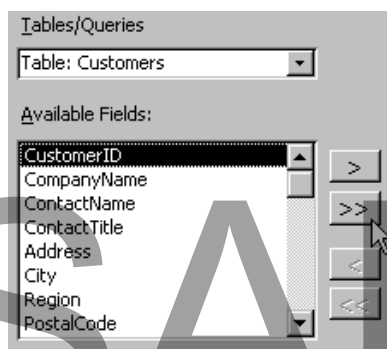


- Name the file **Categories and Products Snapshot**.
- Click **Export**.

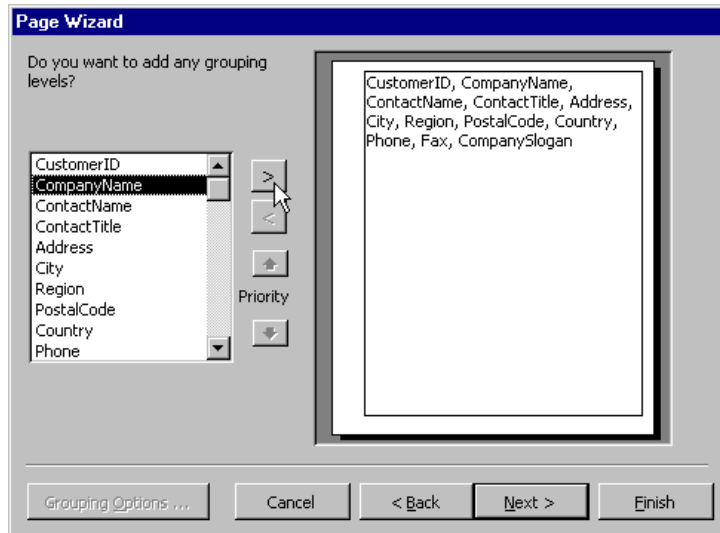
Note: To see a sample of this snapshot report, open *Categories and Reports Snapshot Sample.snp* in your Access XP Intermediate Samples folder.

Developing Data Access Pages

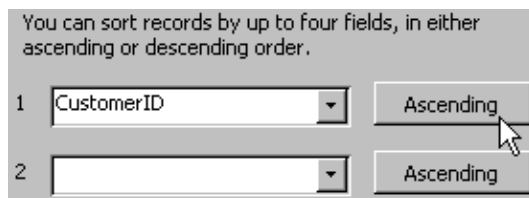
- Select **Pages** in the **Objects** pane.
- Click the **New** button.
- Select **Page Wizard**.
- Select **Customers** from the drop-down menu.
- Click **OK**.
- Select all fields from the **Available Fields** list:



- Click **Next**.
- Select **CompanyName** for the grouping level:



- Click **Next**.
- From the sort order drop-down menu, select **CustomerID**.
- Set the sort order as **Ascending**:



- Click **Next**.
- Type **Customers** as the name for the **data access page**.
- Click **Finish**.
- This opens the **Customers** data access page in **Design** view.
- Save the file as **Customers.htm** in your Access XP Intermediate Samples folder.
- Click **Save**.
- Close the **Customers** data access page.

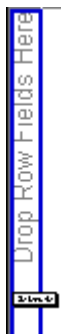
Note: To see a sample of what the **Customers** data access page should look like, open the **Customers Sample.htm** in your **Access XP Intermediate Samples** folder.

SAMPLE

Working with PivotTables and PivotCharts

Creating Pivot Tables and Pivot Charts

- Click **Queries** in the **Objects** pane.
- Double-click the **Quarterly Orders by Product** query to open it in **Datasheet** view.
- From the main menu, select **View > PivotTable View**.
- From the **Pivot Table Field List** toolbox, drag and drop the **Product Name** field on the **row fields** portion of the worksheet:



- Drag and drop the **OrderYear** field on the **filter fields** portion of the worksheet:



- Drag and drop the **CustomerID** field on the **column fields** portion of the worksheet:



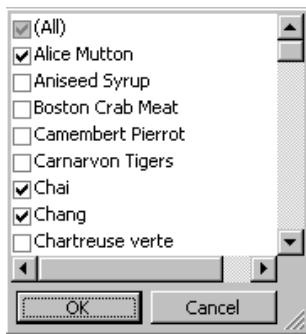
- Drag and drop the **Qtr 1** field on the **detail fields** portion of the worksheet:



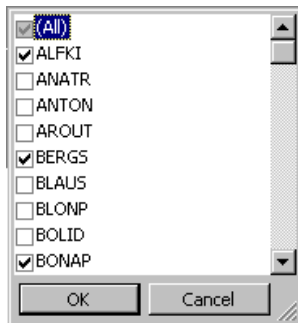
- Click the **Product Name** drop-down menu.
- Deselect the **All** check box.

SAMPLE

- Check the **Alice Mutton**, **Chai**, and **Chang** boxes:



- Click **OK**.
- Click the **CustomerID** drop-down menu.
- Deselect the **All** check box.
- Check the **ALFKI**, **BERGS**, and **BONAP** boxes:

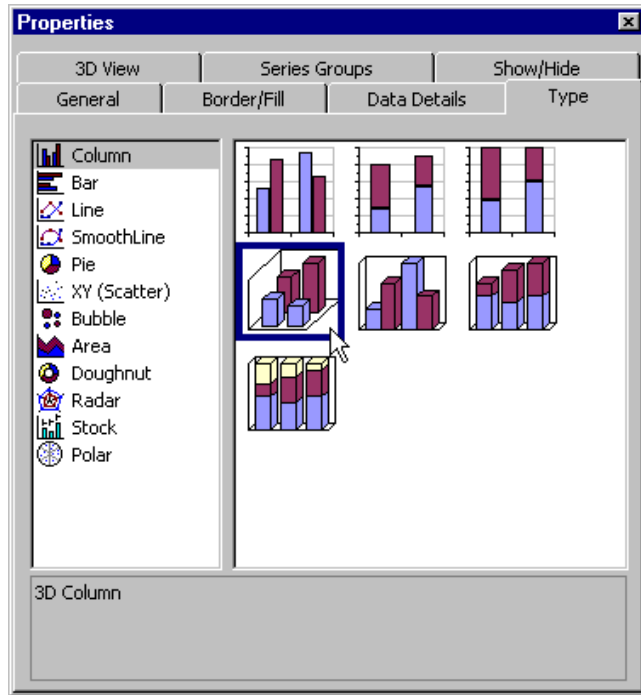


- Click **OK**.
- Save the changes.
- From the main menu, select **View > PivotChart View**.
- Drag and drop the **Qtr 1**, **Qtr 2**, **Qtr 3**, and **Qtr 4** fields on the **data fields** portion of the worksheet:



- From the main menu, select **PivotChart > Chart Type**.
- Click the **Type** tab.
- Change the chart type to a **3D Column** chart:

SAMPLE



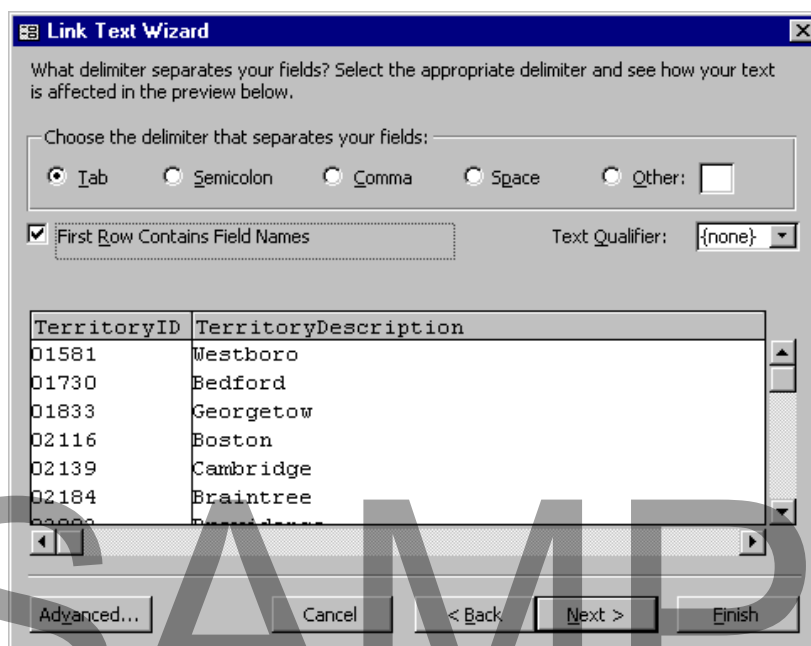
- Save the changes.
- Close the **Quarterly Orders by Product** pivot chart worksheet.

SAMPLE

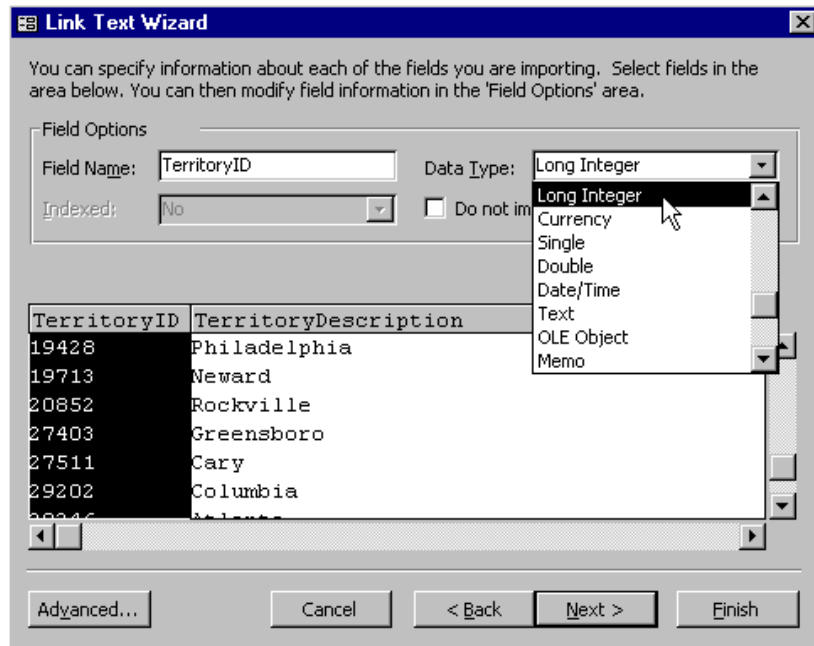
Importing and Exporting

Linking to External Data Sources

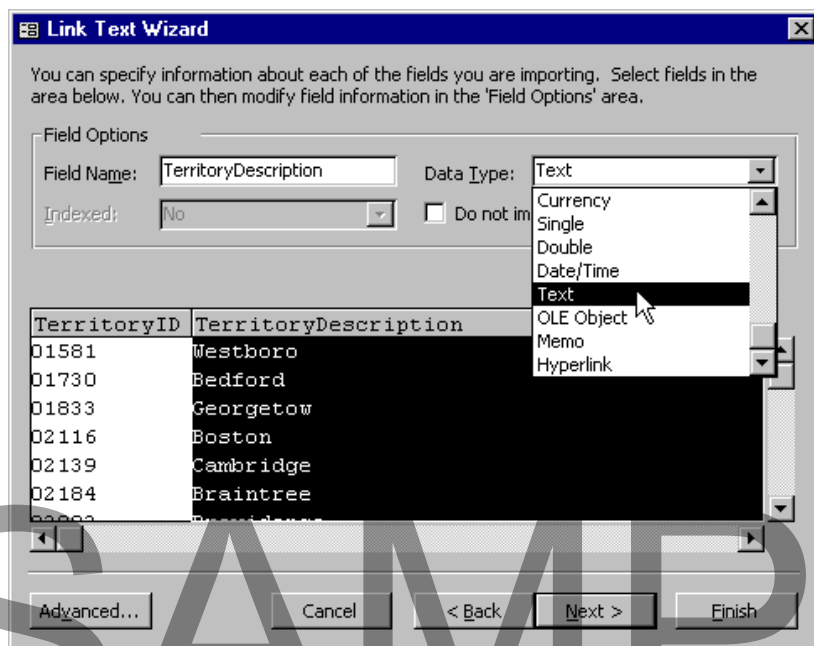
- Click **Tables** in the **Objects** pane.
- Click the **New** button.
- Select **Link Table**.
- Click **OK**.
- From the Files of type drop-down menu, select **Text Files (*.txt; *.csv; *.tab; *.asc)**.
- Locate your Access XP Intermediate Samples folder.
- Select the **Territories.txt** file.
- Click **Link**.
- Click the **Delimited** option button.
- Click **Next**.
- Click the **Tab** option button.
- Check the **First Row Contains Field Names** check box:



- Click **Next**.
- Select the **TerritoryID** column.
- From the **Data Type** drop-down menu, select **Long Integer**:



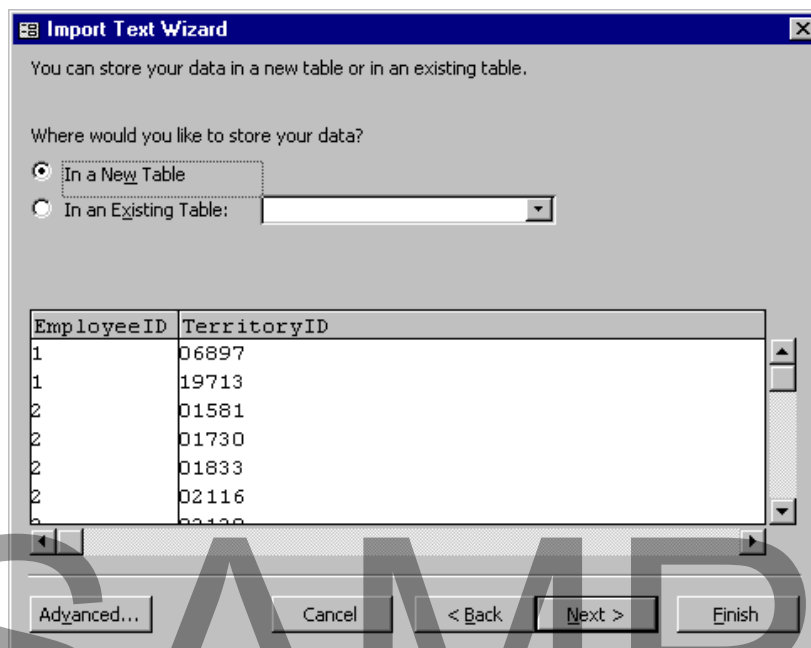
- Select the **TerritoryDescription** column.
- From the **Data Type** drop-down menu, select **Text**:



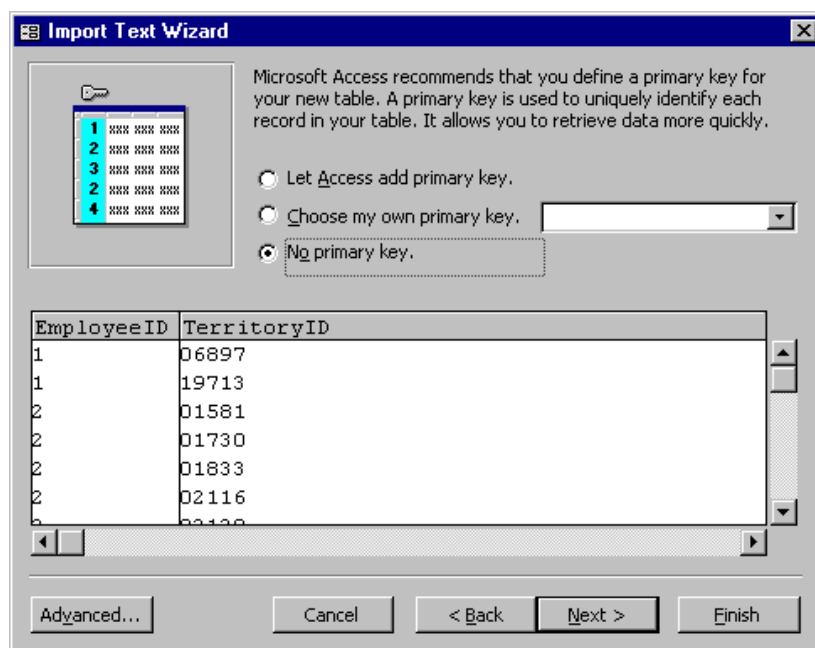
- Scroll to the right and select the **RegionID** column.
- From the **Data Type** drop-down menu, select **Integer**.
- Click **Next**.
- Name the linked table **Territories**.
- Click **Finish**.
- Click **OK** on the confirmation pop-up dialog box.

Importing Data into Access

- Click **Tables** in the **Objects** pane.
- Click the **New** button.
- Select **Import Table**.
- Click **OK**.
- This opens the **Import** dialog box.
- From the Files of type drop-down menu, select **Text Files (*.txt; *.csv; *.tab; *.asc)**.
- Locate your Access XP Intermediate Samples folder.
- Select the **EmployeeTerritories.txt** file.
- Click **Import**.
- Click the **Delimited** option button.
- Click **Next**.
- Click the **Tab** option button.
- Check the **First Row Contains Field Names** check box.
- Click **Next**.
- Click the **In a New Table** option button:



- Click **Next**.
- Accept the defaults and click **Next**.
- Select the **No primary key** option button:



- Click **Next**.
- Name the new imported table **EmployeeTerritories**.
- Click **Finish**.
- Click **OK** on the confirmation pop-up dialog box.

Exporting Data from Access

- Click **Tables** in the **Objects** pane.
- Select the **Products** table.
- From the main menu, select **File > Export**.
- Locate your Access XP Intermediate Samples folder.
- Type **Products** for the File name.
- From the Save as type drop-down menu, select **Text Files (*.txt; *.csv; *.tab; *.asc)**.
- Click **Export**.
- Click the **Delimited** option button.
- Click **Next**.
- Click the **Tab** option button.
- Check the **First Row Contains Field Names** check box.
- Click **Next**.
- Click **Finish**.
- Click **OK**.

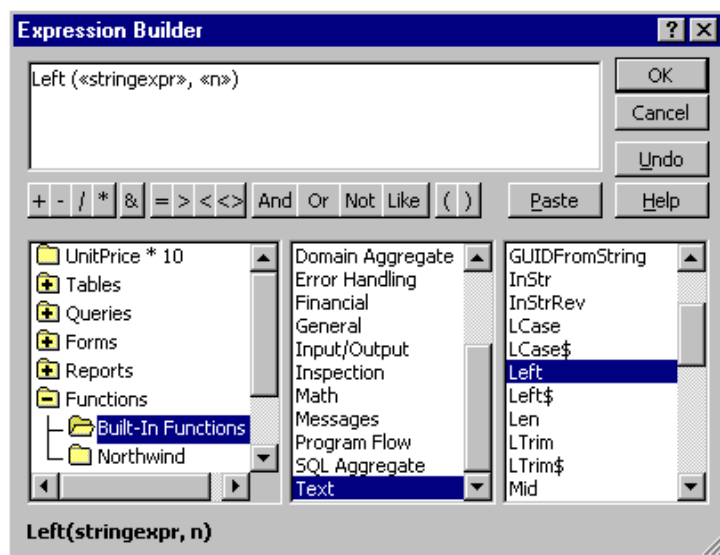
Building Expressions

Using the Expression Builder

- Click **Queries** in the **Objects** pane.
- Open the **UnitPrice * 10** query in **Design** view.
- Click in a blank field on the query grid.
- Click the **Build** button on the **Query Design** toolbar:

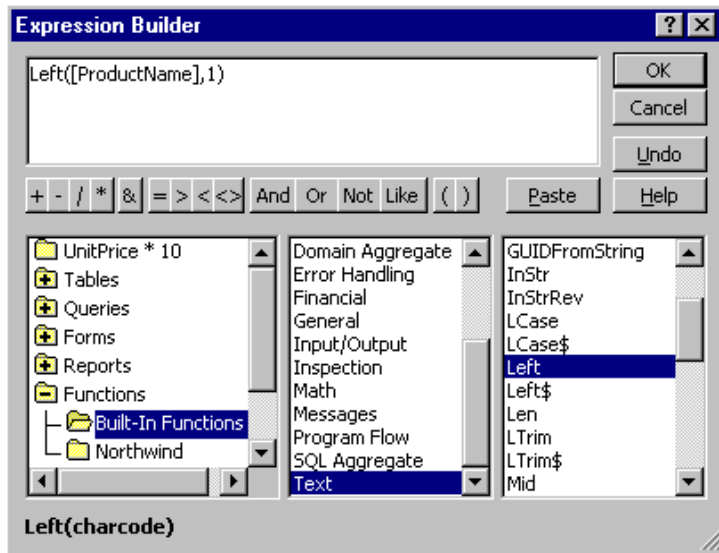


- In the **Expression Builder**, double-click the **Functions** folder.
- Click **Built-In Functions**.
- Click **Text**.
- Double-click the **Left** function to add it to the expression builder pane:



- Replace «stringexpr» with *[ProductName]*.
- Replace «n» with **1**:

SAMPLE



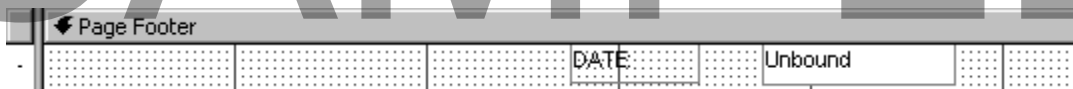
- Click **OK**.
- Rename the column from **Expr2** to **Rolodex**.
- Change the sort order to **Ascending**:

Field:	Rolodex: Left([ProductName],1)
Table:	
Sort:	Ascending
Show:	<input checked="" type="checkbox"/>
Criteria:	
or:	

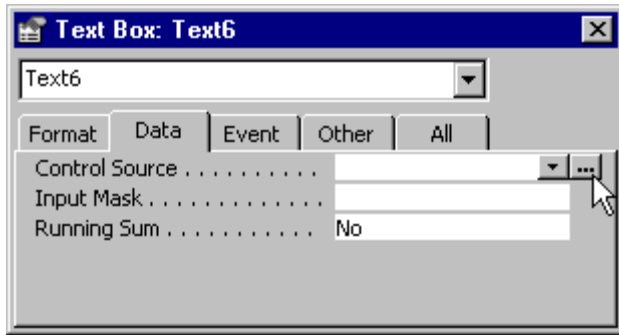
- **Run** the query.
- Save the changes.
- Close the **UnitPrice * 10** query.

Using Common Built-in Functions

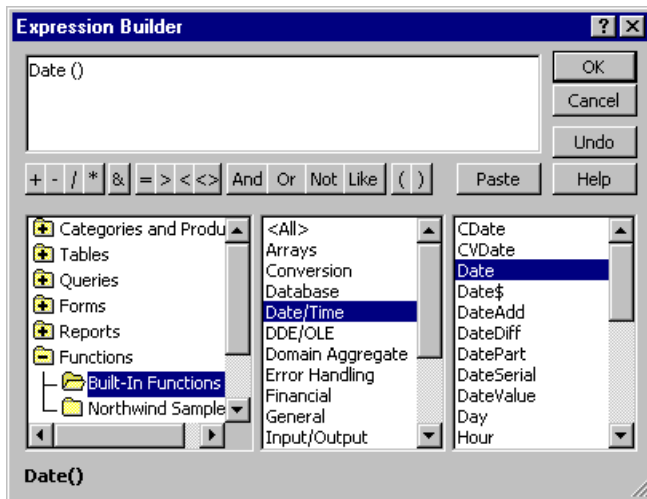
- Click **Reports** in the **Objects** pane.
- Open the **Categories and Products** report in Design view.
- Click the **Text Box** button on the **Toolbox** toolbar.
- Add a **Text Box** control to the **Page Footer** section of the report.
- Label the new control **DATE**:



- Double-click on the **unbound** portion of the **DATE** control.
- Click the **Data** tab.
- Click the ellipses next to the **Control Source** field:



- Double-click **Functions**.
- Click **Built-In Functions**.
- Click **Date/Time**.
- Double-click **Date** to add it to the control:



- Click **OK**.
- Save the changes to the **Categories and Products** report.
- Close the report.
- Exit Microsoft Access 2002.

SAMPLE